

# Vibration & Door Sensor

## User Manual



The combined vibration & door/window sensor is designed to sense vibrations as well as detect opening of a door or window (magnetic contact). The adjustable sensitivity eliminates common false alarm effectively. When force entry is detected either through a door, window or other possible entry locations, the sensor will automatically alert you via the app.

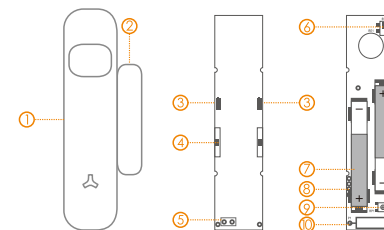
### Features:

Unique design, easy to install.  
Combines vibration sensor and door/window sensor.  
Features LED light indicator for alarm/battery status.  
Adjustable sensitivity, high or low.  
Anti-interference FHSS hopping frequency.  
Up to 12 months of battery life depending on usage.  
Tamper switch for vandal protection.

### Specification:

Power Supply: DC 3V (2pcs AAAA LR61 batteries)  
Standby Current :  $\leq 10\mu A$   
Alarm Current:  $\leq 35mA$   
Temperature:  $-20^{\circ}C \sim 55^{\circ}C$   
Humidity: 40% (non-condensing)  
RFI Characteristic: 25V/m(10MHz~ 1Ghz)  
Digital processing unit: 12/8 nits MHZ  
Wireless Transmit Distance: up to 100m (in open area)  
Detector Dimensions: 90(H) x 21(W) x 18(D)mm  
Magnet Dimensions: 45(H) x 10(W) x 11(D)mm

### Working Status:



1. Transmitter
2. Magnet
3. LED Indicator
4. Reed Switches
5. Connector for Wired Sensors (N/C)
6. Tamper Switch
7. Battery Compartment
8. Upgrading Software Terminal Block
9. Sensitivity Setting
10. Vibration Sensor

### Vibration Sensor:

Anti-wireless and electromagnetic wave, do not touch the interface.



### Tamper Switch:

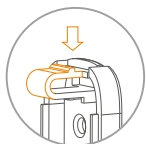
If an intruder attempts to remove or damage the sensor, a tamper alarm is triggered and the user is notified immediately.

### LED Indicator:

**LED flashes once every three seconds:** Lower battery, please replace the battery (AAAA LR61) .

**LED flashes once:** A vibration or opening has been detected.  
The tamper switch has been triggered.

### Pair the Vibration & Door Sensor to Alarm Panel



Before pairing, please ensure the alarm system is in DISARM mode.

1. Remove the battery activation strip and power it on, detector enters into working mode.



2. Press enroll button of alarm system or enter Accessories menu, tap on icon, the alarm system beeps once when it's ready for enrolling.



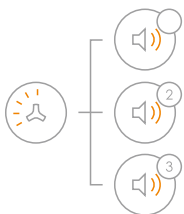
Move the magnet away from the sensor.  
The sensor is set to Normal Zone by default.

or



Strike the Surface on which the detector is put or installed.  
The sensor is set to 24-Hour Zone by default.

The sensor sends a signal to the control panel.



System beeps once, the LED light flashes once, the enrollment is successful.

If system beeps twice and the LED light flashes once, the accessories have been enrolled before.

If three beeps are heard and LED light flashes once, the storage is full.

Note: Please do not use the tamper switch or trigger low battery to enroll

The enrolled sensors will automatically appear in the Accessories Menu in the app. You can customize the accessory name, select the zone type and also delete the accessory from the app, if required.

### Installation:

1. Choose the desired location where opening or closing of a window, door, gate or medicine cabinets, safe box and the true physic vibration.

Note: Ensure the area that the sensor will be located is clean and free from dust and moisture. Avoid mounting the sensors in areas with lots of metal or electrical wiring.

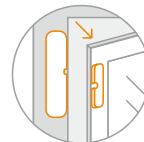
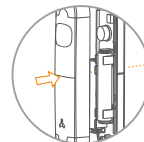
2. Remove the paper strip of the double-sided tape on the back of transmitter and magnet. Or you can fix the rear base on the place by using the screws for both transmitter and magnet. Carefully mount the transmitter on the door frame and the magnet on the door.

3. Mount the magnet on to the door/window no more than 1cm from the sensor. Make sure their grooves are aligned with one another. When the door is closed, the LED should not come on.

Note: vertical installation is recommended.

### Notice:

1. Avoid sources of ambient vibration or sound, such as loudspeakers, air conditioners, fans, blowers or doorbells.
2. Pay attention to the frequency range of vibration. The high vibration and ultrasonic interference are likely to lead to false alarm.

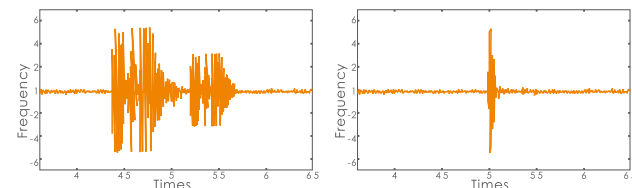


### Door Sensor Testing

When it senses door opening or moving in arm status, it will alarm immediately and send notification or make a phone call.

### Vibration Testing:

When there is a certain external force disturbance of the glass or wall. The vibration will identify whether alarm according to the vibration frequency.



### Sensitivity Adjustment:

The sensor has two sensitivity settings. You can change the sensitivity using a small screwdriver.

L: Low sensitivity for normal home environment  
H: High sensitivity for sound-proof rooms

